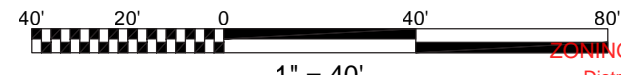


SITE KEYNOTES:

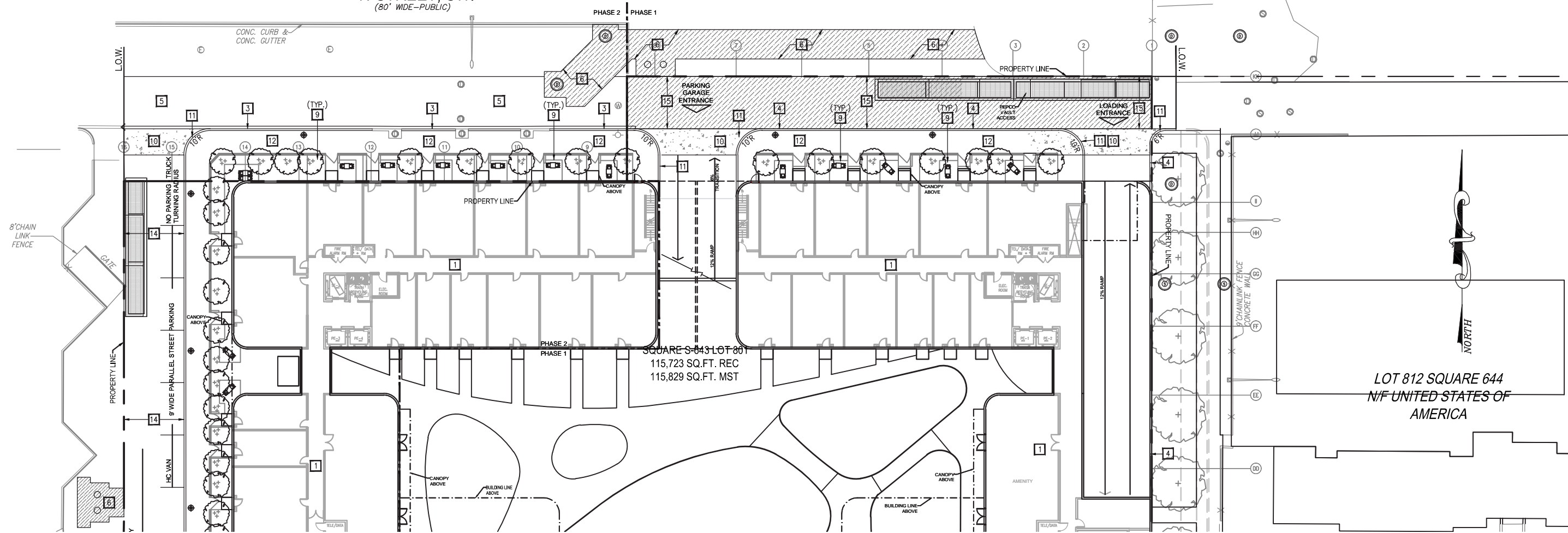
- 1 NEW BUILDING. REFER TO ARCHITECTURAL DRAWING FOR DETAILS.
- 2 EXISTING BUILDING AND FACADE TO BE RENOVATED. REFER TO ARCHITECTURAL DRAWING FOR DETAILS.
- 3 NEW CONCRETE CURB AND CONCRETE GUTTER PER DC/DDOT STANDARDS AND SPECIFICATIONS. SEE SHEET C-502 FOR DETAILS.
- 4 NEW CONCRETE CURB PER DC/DDOT STANDARDS AND SPECIFICATIONS. SEE SHEET C-502 FOR DETAILS.
- 5 NEW ASPHALT SURFACE COURSE TO CENTERLINE OF ROAD, FRONTING CONSTRUCTION PER DC/DDOT STANDARDS AND SPECIFICATIONS. SEE SHEET C-502 FOR DETAILS.
- 6 NEW ASPHALT PAVEMENT WITH CONCRETE BASE PER DC/DDOT STANDARDS AND SPECIFICATIONS. SEE SHEET C-502 FOR DETAILS.
- 7 NEW STREET TREE. REFER TO LANDSCAPE DRAWINGS FOR SPECIES AND DETAILS.
- 8 EXISTING STREET TREE TO REMAIN.
- 9 NEW ORNAMENTAL TREE. REFER TO LANDSCAPE DRAWING FOR SPECIES AND DETAILS.
- 10 NEW CONCRETE APRON PER DC/DDOT STANDARDS AND SPECIFICATIONS.
- 11 NEW CONCRETE DRIVEWAY ENTRANCE WITH 10'-0" RADIUS PER DC/DDOT STANDARDS AND SPECIFICATIONS. SEE SHEET C-502 FOR DETAILS.
- 12 NEW CONCRETE SIDEWALK. REFER TO LANDSCAPE DRAWING FOR DETAILS.
- 13 NEW CONCRETE DRIVEWAY ENTRANCE WITH 6'-0" RADIUS PER DC/DDOT STANDARDS AND SPECIFICATIONS. SEE SHEET C-502 FOR DETAILS.
- 14 NEW ASPHALT SURFACE COURSE TO MATCH EXISTING ASPHALT PER DDOT STANDARDS AND SPECIFICATIONS.
- 15 NEW ASPHALT PAVEMENT WITH CONCRETE BASE ABOVE PROPOSED STRUCTURE PER DC/DDOT STANDARDS AND SPECIFICATIONS. SEE SHEET C-502 FOR DETAILS.
- 16 EXISTING CURB AND GUTTER TO REMAIN.
- 17 NEW MULTI-SPACE PARKING METER PER DC/DDOT STANDARDS AND SPECIFICATIONS.
- 18 NEW HANDICAP RAMP WITH TRUNCATED DOMES PER DC/DDOT STANDARDS AND SPECIFICATIONS. SEE SHEET C1.07 FOR DETAILS.
- 19 NEW ASPHALT PAVEMENT PER DC/DDOT STANDARDS AND SPECIFICATIONS. SEE SHEET C-502 FOR DETAILS.



1" = 40'
TITLE: SITE PLAN SOUTH
NUMBER: C-05

ZONING COMMISSION
 District of Columbia
 CASE NO.07-13D
 EXHIBIT NO.19A6

H-STREET, SW.
(80' WIDE--PUBLIC)

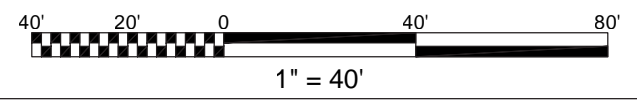


SQUARE S-043 LOT 80
115,723 SQ.FT. REC
115,829 SQ.FT. MST

LOT 812 SQUARE 644
N/F UNITED STATES OF
AMERICA

SITE KEYNOTES:

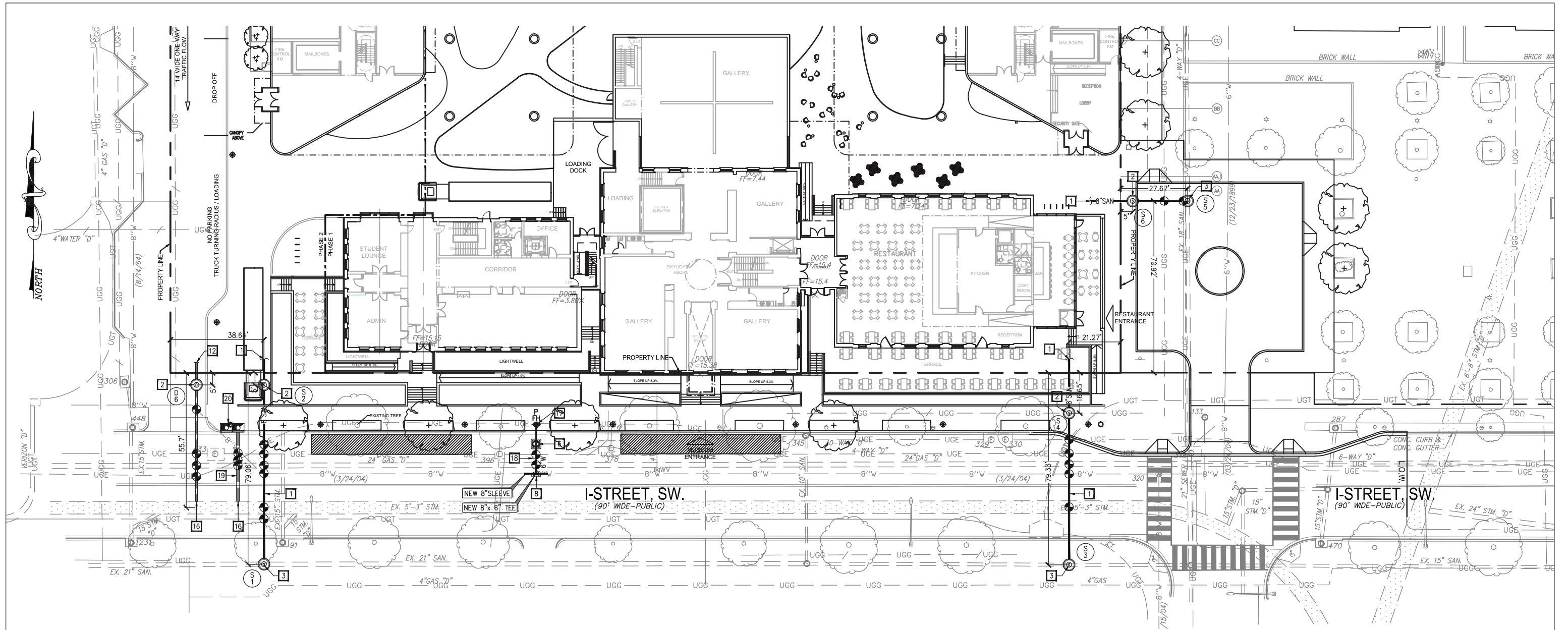
- 1 NEW BUILDING. REFER TO ARCHITECTURAL DRAWING FOR DETAILS.
- 2 EXISTING BUILDING AND FACADE TO BE RENOVATED. REFER TO ARCHITECTURAL DRAWING FOR DETAILS.
- 3 NEW CONCRETE CURB AND CONCRETE GUTTER PER DC/DDOT STANDARDS AND SPECIFICATIONS. SEE SHEET C-502 FOR DETAILS.
- 4 NEW CONCRETE CURB PER DC/DDOT STANDARDS AND SPECIFICATIONS. SEE SHEET C-502 FOR DETAILS.
- 5 NEW ASPHALT SURFACE COURSE TO CENTERLINE OF ROAD, FRONTING CONSTRUCTION PER DC/DDOT STANDARDS AND SPECIFICATIONS. SEE SHEET C-502 FOR DETAILS.
- 6 NEW ASPHALT PAVEMENT WITH CONCRETE BASE PER DC/DDOT STANDARDS AND SPECIFICATIONS. SEE SHEET C-502 FOR DETAILS.
- 7 NEW STREET TREE. REFER TO LANDSCAPE DRAWINGS FOR SPECIES AND DETAILS.
- 8 EXISTING STREET TREE TO REMAIN.
- 9 NEW ORNAMENTAL TREE. REFER TO LANDSCAPE DRAWING FOR SPECIES AND DETAILS.
- 10 NEW CONCRETE APRON PER DC/DDOT STANDARDS AND SPECIFICATIONS.
- 11 NEW CONCRETE DRIVEWAY ENTRANCE WITH 10'-0" RADIUS PER DC/DDOT STANDARDS AND SPECIFICATIONS. SEE SHEET C-502 FOR DETAILS.
- 12 NEW CONCRETE SIDEWALK. REFER TO LANDSCAPE DRAWING FOR DETAILS.
- 13 NEW CONCRETE DRIVEWAY ENTRANCE WITH 6'-0" RADIUS PER DC/DDOT STANDARDS AND SPECIFICATIONS. SEE SHEET C-502 FOR DETAILS.
- 14 NEW ASPHALT SURFACE COURSE TO MATCH EXISTING ASPHALT PER DDOT STANDARDS AND SPECIFICATIONS.
- 15 NEW ASPHALT PAVEMENT WITH CONCRETE BASE ABOVE PROPOSED STRUCTURE PER DC/DDOT STANDARDS AND SPECIFICATIONS. SEE SHEET C-502 FOR DETAILS.
- 16 EXISTING CURB AND GUTTER TO REMAIN.
- 17 NEW MULTI-SPACE PARKING METER PER DC/DDOT STANDARDS AND SPECIFICATIONS.
- 18 NEW HANDICAP RAMP WITH TRUNCATED DOMES PER DC/DDOT STANDARDS AND SPECIFICATIONS. SEE SHEET C1.07 FOR DETAILS.
- 19 NEW ASPHALT PAVEMENT PER DC/DDOT STANDARDS AND SPECIFICATIONS. SEE SHEET C-502 FOR DETAILS.



1" = 40'

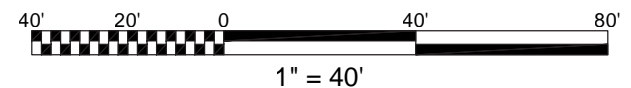
TITLE:
SITE PLAN
NORTH

NUMBER:
C-06

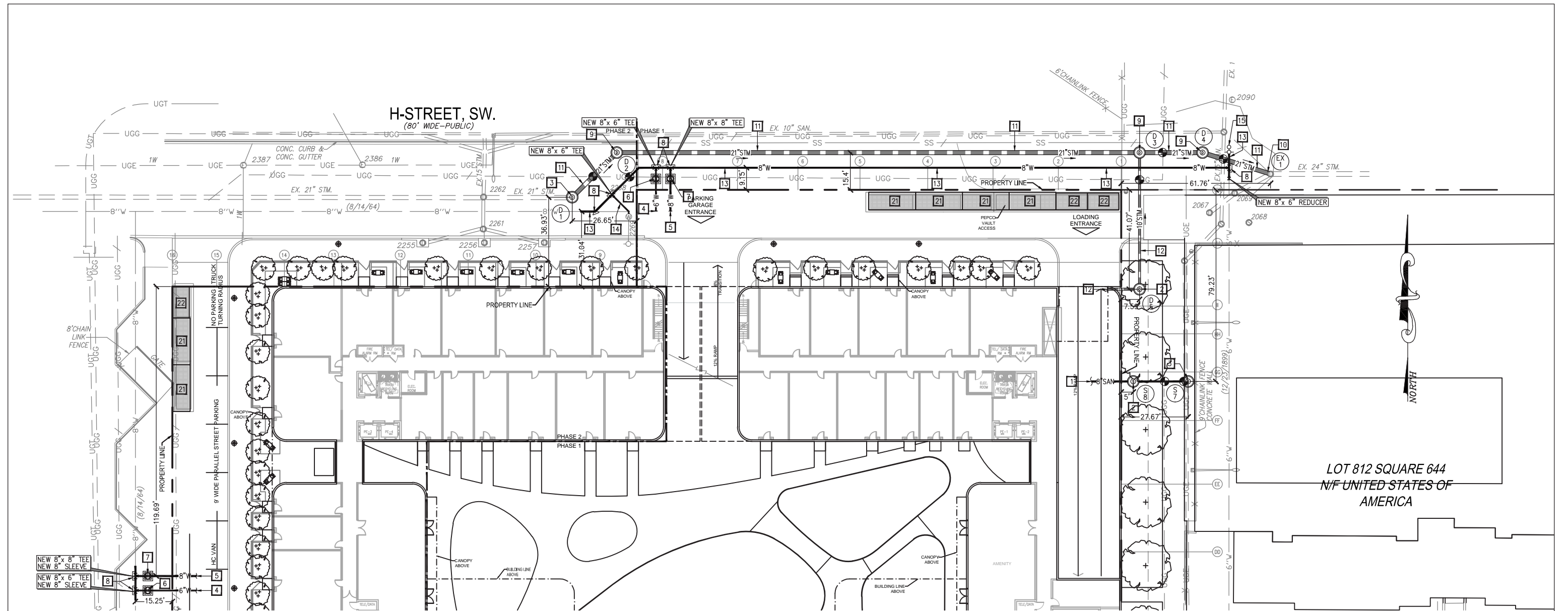


UTILITY KEYNOTES:

- 1 NEW 8" PVC SCH-40 SANITARY SEWER LATERAL.
- 2 NEW 4.0" DIAMETER CLEANOUT MANHOLE PER DC/WATER STANDARDS AND SPECIFICATIONS. REFER TO DC/WATER STANDARD DETAIL S-20.01.
- 3 NEW 4.0" DIAMETER MANHOLE WITH DOGHOUSE BASE PER DC/WATER STANDARDS AND SPECIFICATIONS. REFER TO DC/WATER STANDARD DRAWING S-20.11.
- 4 NEW 6" DIP CLASS 52 DOMESTIC WATER SERVICE LATERAL. BACKFLOW PREVENTER ASSEMBLY TO MEET ASSE-1048.
- 5 NEW 8" DIP CLASS 52 FIRE SERVICE LATERAL. BACKFLOW PREVENTER ASSEMBLY TO MEET ASSE-1048.
- 6 NEW 6" WATER VALVE WITH 4.0" CASING PER DC/WATER STANDARDS AND SPECIFICATIONS. REFER TO DC/WATER STANDARD DRAWING W-20.01.
- 7 NEW 8" WATER VALVE WITH 4.0" CASING PER DC/WATER STANDARDS AND SPECIFICATIONS. REFER TO DC/WATER STANDARD DRAWING W-20.01.
- 8 NEW CONCRETE THRUST BLOCK PER DC/WATER STANDARDS AND SPECIFICATIONS. REFER TO DC/WATER STANDARD DRAWING W-40.01.
- 9 NEW 4.0" DIAMETER MANHOLE PER DC/WATER STANDARDS AND SPECIFICATIONS. REFER TO DC/WATER STANDARD DETAIL S-20.01.
- 10 NEW CONNECTION TO EXISTING MANHOLE PER DC/WATER STANDARDS AND SPECIFICATIONS.
- 11 NEW RCP 21" STORM SEWER LATERAL.
- 12 NEW PVC SCH-40 10" STORM SEWER LATERAL.
- 13 NEW 8" DIP CLASS 52 WATER LATERAL.
- 14 NEW 6" DIP CLASS 52 FOR FIRE HYDRANT.
- 15 NEW 8" BLOW OFF VALVE.
- 16 NEW ZEE STRAP CONNECTION TO EXISTING COMBINED SEWER MAIN PER DC/WATER STANDARDS AND SPECIFICATIONS. REFER TO DC/WASA OFFICE MANUAL DRAWINGS 35.61-7
- 17 NEW FIRE HYDRANT. REFER TO DC/WATER STANDARD DRAWING W-50.01.
- 18 NEW 6" DIP CLASS 52 FOR FIRE HYDRANT.
- 19 NEW DOUBLE CATCH BASIN PER DC/WATER STANDARDS AND SPECIFICATIONS. REFER TO DC/WATER STANDARD DRAWING S-30.03.
- 20 NEW 15" ROPRS STORM SEWER.
- 21 NEW 6'x18' FULLY GRATED PEPCO TRANSFORMER VAULT. REFER TO DRY UTILITY COMPANY FOR DETAILS.
- 22 NEW 6'x12' PEPCO BUS VAULT. REFER TO DRY UTILITY COMPANY FOR DETAILS.



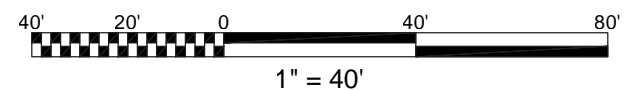
1" = 40'
TITLE: UTILITY PLAN SOUTH
NUMBER: C-07



LOT 812 SQUARE 644
N/F UNITED STATES OF
AMERICA

UTILITY KEYNOTES:

- | | |
|---|--|
| <p>1 NEW 8" PVC SCH-40 SANITARY SEWER LATERAL.</p> <p>2 NEW 4.0" DIAMETER CLEANOUT MANHOLE PER DC/WATER STANDARDS AND SPECIFICATIONS. REFER TO DC/WATER STANDARD DETAIL S-20.01.</p> <p>3 NEW 4.0" DIAMETER MANHOLE WITH DOGHOUSE BASE PER DC/WATER STANDARDS AND SPECIFICATIONS. REFER TO DC/WATER STANDARD DRAWING S-20.11.</p> <p>4 NEW 6" DIP CLASS 52 DOMESTIC WATER SERVICE LATERAL. BACKFLOW PREVENTER ASSEMBLY TO MEET ASSE-1015. WATER METER TO BE LOCATED INSIDE THE BUILDING.</p> <p>5 NEW 8" DIP CLASS 52 FIRE SERVICE LATERAL. BACKFLOW PREVENTER ASSEMBLY TO MEET ASSE-1048.</p> <p>6 NEW 6" WATER VALVE WITH 4.0" CASING PER DC/WATER STANDARDS AND SPECIFICATIONS. REFER TO DC/WATER STANDARD DRAWING W-20.01.</p> <p>7 NEW 8" WATER VALVE WITH 4.0" CASING PER DC/WATER STANDARDS AND SPECIFICATIONS. REFER TO DC/WATER STANDARD DRAWING W-20.01.</p> <p>8 NEW CONCRETE THRUST BLOCK PER DC/WATER STANDARDS AND SPECIFICATIONS. REFER TO DC/WATER STANDARD DRAWING W-40.01.</p> <p>9 NEW 4.0" DIAMETER MANHOLE PER DC/WATER STANDARDS AND SPECIFICATIONS. REFER TO DC/WATER STANDARD DETAIL S-20.01.</p> <p>10 NEW CONNECTION TO EXISTING MANHOLE PER DC/WATER STANDARDS AND SPECIFICATIONS.</p> | <p>11 NEW RCP 21" STORM SEWER LATERAL.</p> <p>12 NEW PVC SCH-40 10" STORM SEWER LATERAL.</p> <p>13 NEW 8" DIP CLASS 52 WATER LATERAL.</p> <p>14 NEW 6" DIP CLASS 52 FOR FIRE HYDRANT.</p> <p>15 NEW 8" BLOW OFF VALVE.</p> <p>16 NEW ZEE STRAP CONNECTION TO EXISTING COMBINED SEWER MAIN PER DC/WATER STANDARDS AND SPECIFICATIONS. REFER TO DC/WASA OFFICE MANUAL DRAWINGS 35.61-7</p> <p>17 NEW FIRE HYDRANT. REFER TO DC/WATER STANDARD DRAWING W-50.01.</p> <p>18 NEW 6" DIP CLASS 52 FOR FIRE HYDRANT.</p> <p>19 NEW DOUBLE CATCH BASIN PER DC/WATER STANDARDS AND SPECIFICATIONS. REFER TO DC/WATER STANDARD DRAWING S-30.03.</p> <p>20 NEW 15" ROPRS STORM SEWER.</p> <p>21 NEW 6'x18' FULLY GRATED PEPCO TRANSFORMER VAULT. REFER TO DRY UTILITY COMPANY FOR DETAILS.</p> <p>22 NEW 6'x12' PEPCO BUS VAULT. REFER TO DRY UTILITY COMPANY FOR DETAILS.</p> |
|---|--|

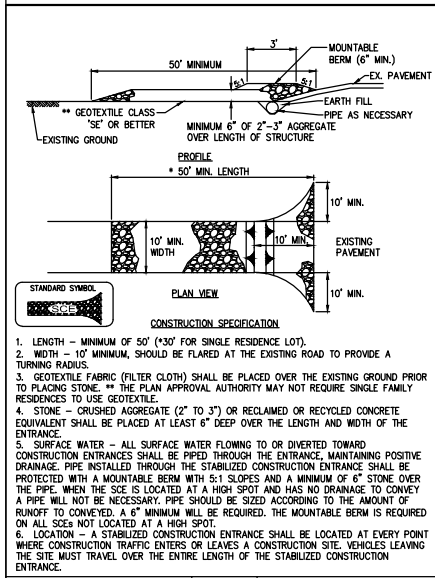


1" = 40'

TITLE:
UTILITY PLAN
NORTH

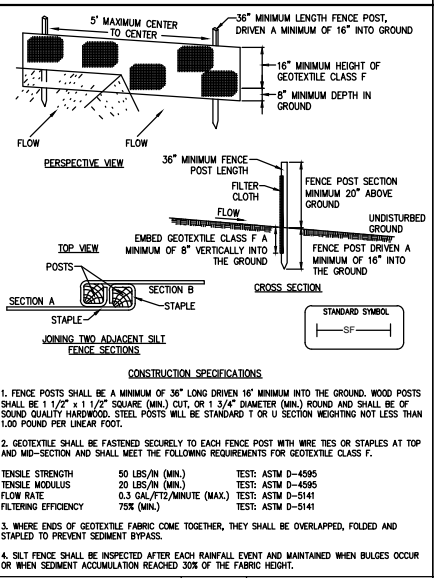
NUMBER:
C-08

DETAIL 1 - STABILIZED CONSTRUCTION ENTRANCE



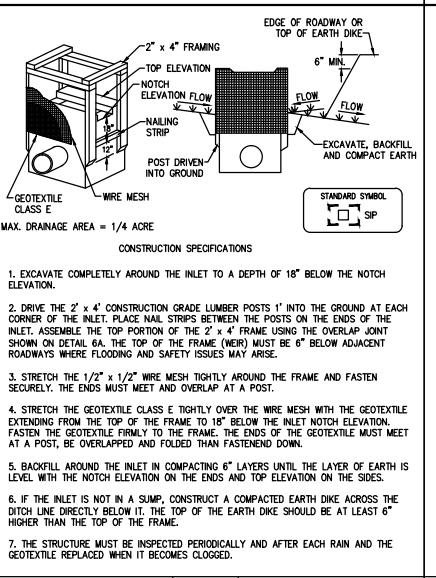
CONSTRUCTION SPECIFICATIONS
1. LENGTH - MINIMUM OF 50' (30' FOR SINGLE RESIDENCE LOT).
2. WIDTH - 10' MINIMUM, SHOULD BE FLARED AT THE EXISTING ROAD TO PROVIDE A TURNING RADIUS.
3. GEOTEXTILE FABRIC (FILTER CLOTH) SHALL BE PLACED OVER THE EXISTING GROUND PRIOR TO PLACING STONE...

DETAIL 4 - SILT FENCE



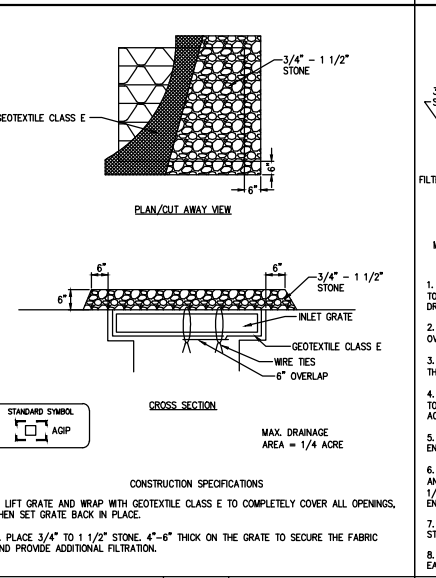
CONSTRUCTION SPECIFICATIONS
1. FENCE POSTS SHALL BE A MINIMUM OF 36' LONG DRIVEN 18" INTO THE GROUND. WOOD POSTS SHALL BE 1 1/2" x 1 1/2" SQUARE (MIN) CUT OR 1 3/4" DIAMETER (MIN) ROUND AND SHALL BE OF SOUND QUALITY HARDWOOD. STEEL POSTS WILL BE STANDARD 1 OR U SECTION WEIGHING NOT LESS THAN 2.0 POUND PER LINEAR FOOT.

DETAIL 6A - STANDARD INLET PROTECTION



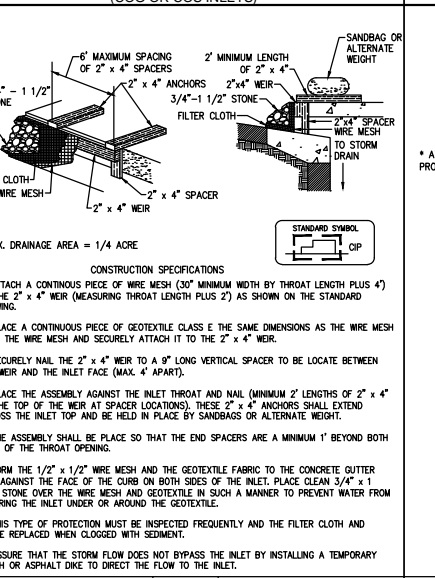
CONSTRUCTION SPECIFICATIONS
1. EXCAVATE COMPLETELY AROUND THE INLET TO A DEPTH OF 18" BELOW THE NOTCH ELEVATION.
2. DRIVE THE 2' x 4' CONSTRUCTION GRADE LUMBER POSTS 1" INTO THE GROUND AT EACH CORNER OF THE INLET. PLACE NAIL STRIPS BETWEEN THE POSTS ON THE ENDS OF THE INLET...

DETAIL 6B - AT GRADE INLET PROTECTION



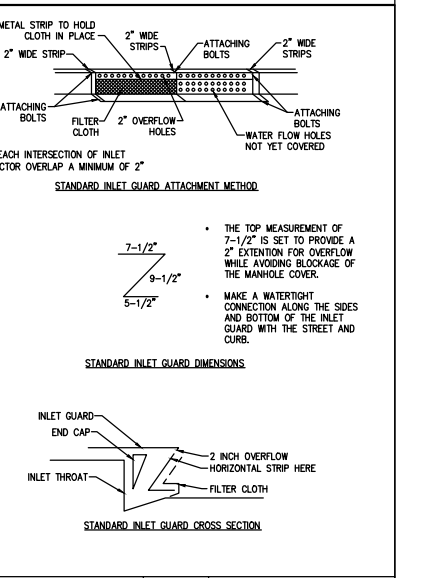
CONSTRUCTION SPECIFICATIONS
1. LIFT GRATE AND WRAP WITH GEOTEXTILE CLASS E TO COMPLETELY COVER ALL OPENINGS. THEN SET GRATE BACK IN PLACE.
2. PLACE 3/4\"/>

DETAIL 6C - CURB INLET PROTECTION (COG OR COS INLETS)



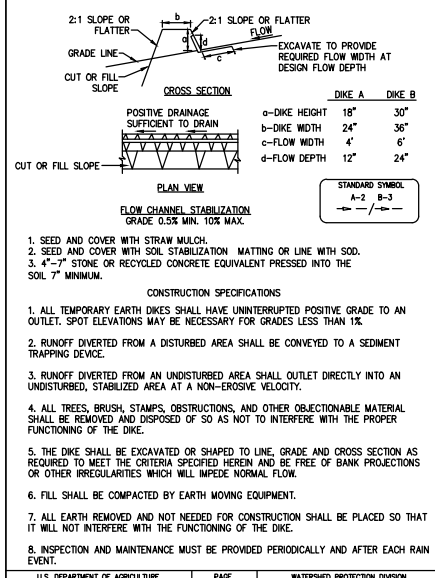
CONSTRUCTION SPECIFICATIONS
1. ATTACH A CONTINUOUS PIECE OF WIRE MESH (30\"/>

DETAIL 6E - AT GRADE INLET GUARD



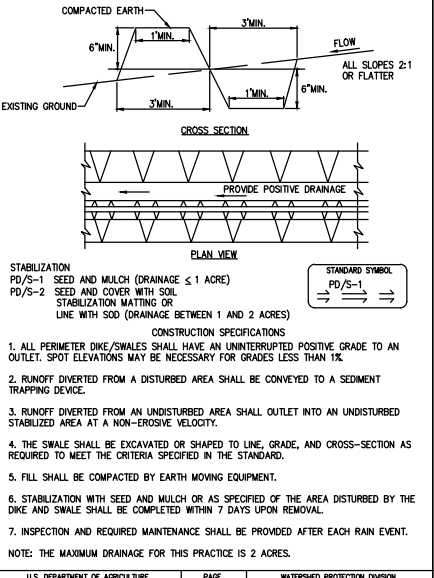
CONSTRUCTION SPECIFICATIONS
1. THE TOP MEASUREMENT OF 7-1/2\"/>

DETAIL 9 - EARTH DIKE



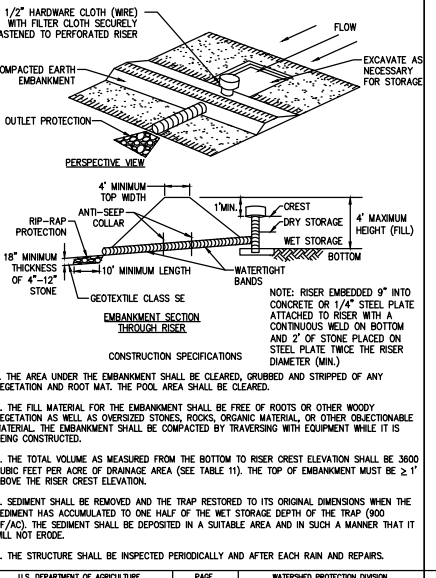
CONSTRUCTION SPECIFICATIONS
1. SEED AND COVER WITH STRAW MULCH.
2. SEED AND COVER WITH SOIL STABILIZATION MATTING OR LINE WITH SOD.
3. 4\"/>

DETAIL 11 - PERIMETER DIKE / SWALE



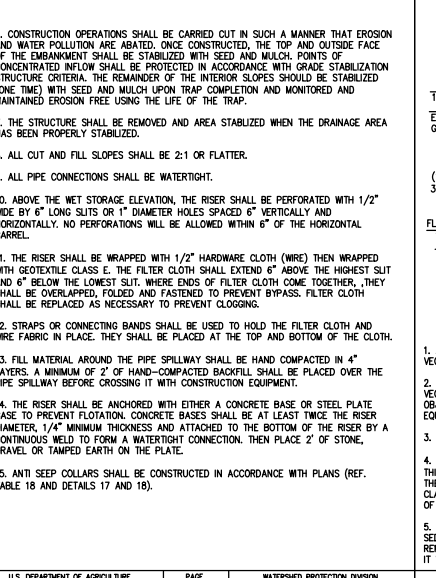
CONSTRUCTION SPECIFICATIONS
1. ALL PERIMETER DIKE/SWALES SHALL HAVE AN UNDISTURBED POSITIVE GRADE TO AN OUTLET. SPOT ELEVATIONS MAY BE NECESSARY FOR GRADES LESS THAN 1%.

DETAIL 12 - PIPE OUTLET SEDIMENT TRAP - ST I



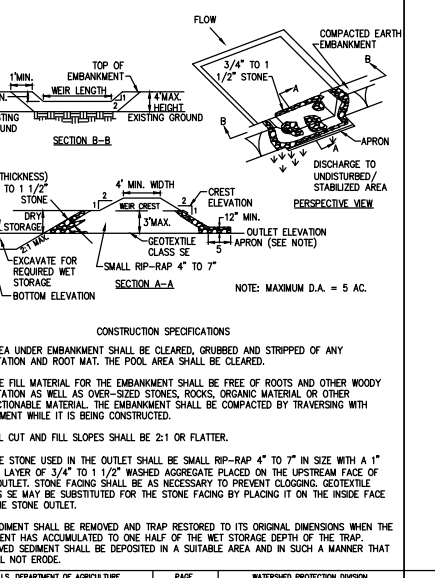
CONSTRUCTION SPECIFICATIONS
1. THE AREA UNDER THE EMBANKMENT SHALL BE CLEARED, GRUBBED AND STRIPPED OF ANY VEGETATION AND ROOT MAT. THE POOL AREA SHALL BE CLEARED.

PIPE OUTLET SEDIMENT TRAP - ST II



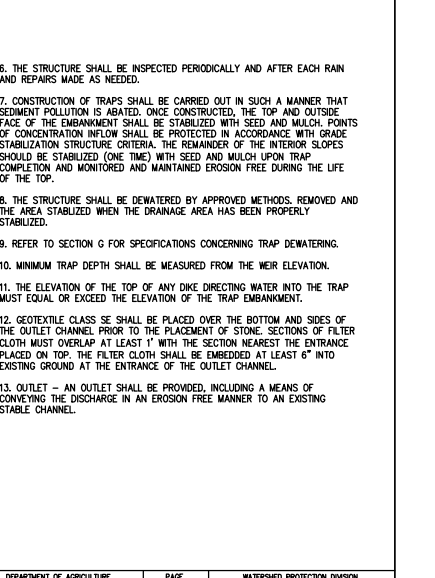
CONSTRUCTION SPECIFICATIONS
1. THE AREA UNDER THE EMBANKMENT SHALL BE CLEARED, GRUBBED AND STRIPPED OF ANY VEGETATION AND ROOT MAT. THE POOL AREA SHALL BE CLEARED.

DETAIL 13 - STONE OUTLET SEDIMENT TRAP - ST II



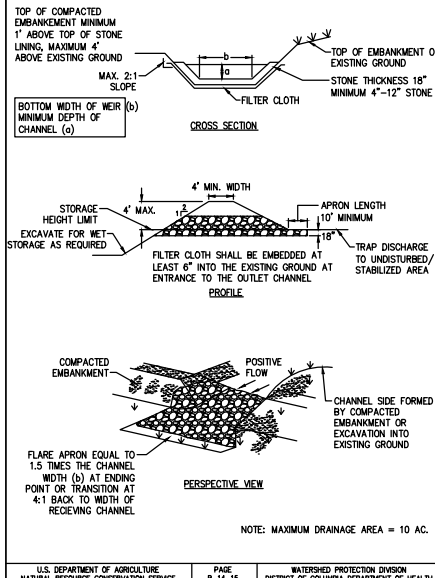
CONSTRUCTION SPECIFICATIONS
1. AREA UNDER EMBANKMENT SHALL BE CLEARED, GRUBBED AND STRIPPED OF ANY VEGETATION AND ROOT MAT. THE POOL AREA SHALL BE CLEARED.

STONE OUTLET SEDIMENT TRAP - ST II



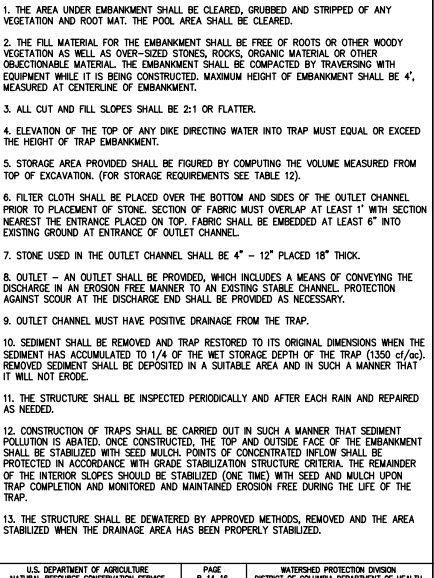
CONSTRUCTION SPECIFICATIONS
1. THE AREA UNDER THE EMBANKMENT SHALL BE CLEARED, GRUBBED AND STRIPPED OF ANY VEGETATION AND ROOT MAT. THE POOL AREA SHALL BE CLEARED.

DETAIL 14 - RIP-RAP OUTLET SEDIMENT TRAP - ST III



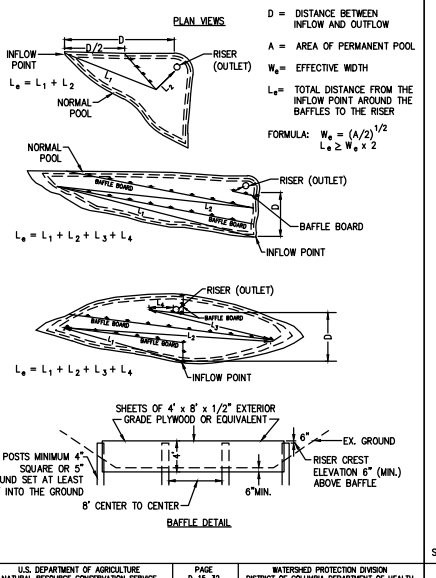
CONSTRUCTION SPECIFICATIONS
1. THE AREA UNDER EMBANKMENT SHALL BE CLEARED, GRUBBED AND STRIPPED OF ANY VEGETATION AND ROOT MAT. THE POOL AREA SHALL BE CLEARED.

RIP-RAP OUTLET SEDIMENT TRAP - ST III



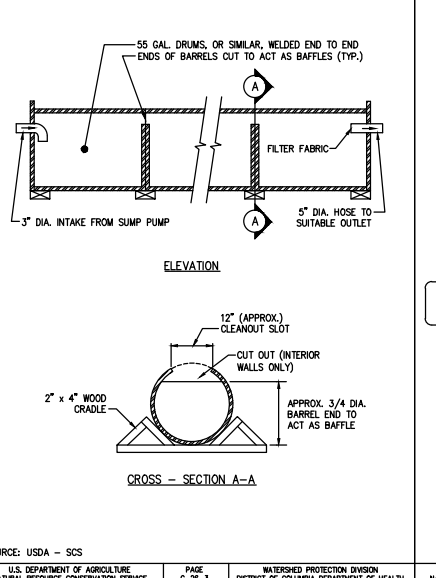
CONSTRUCTION SPECIFICATIONS
1. THE AREA UNDER EMBANKMENT SHALL BE CLEARED, GRUBBED AND STRIPPED OF ANY VEGETATION AND ROOT MAT. THE POOL AREA SHALL BE CLEARED.

DETAIL 22 - SEDIMENT BASIN/TRAP BAFFLES



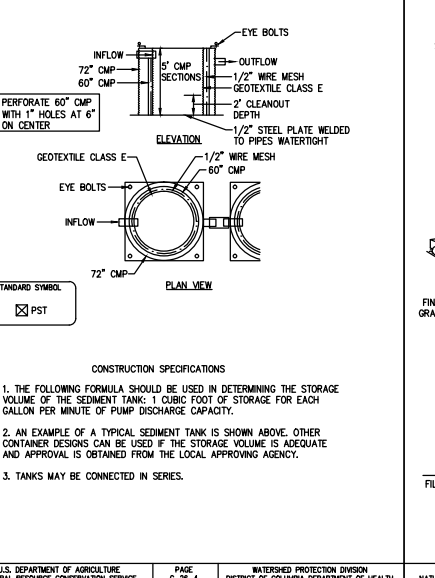
CONSTRUCTION SPECIFICATIONS
1. THE AREA UNDER EMBANKMENT SHALL BE CLEARED, GRUBBED AND STRIPPED OF ANY VEGETATION AND ROOT MAT. THE POOL AREA SHALL BE CLEARED.

DETAIL 34 - PORTABLE SEDIMENT TANK (HORIZONTAL)



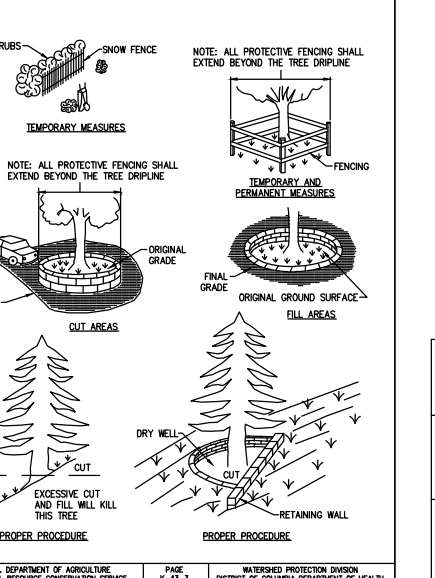
CONSTRUCTION SPECIFICATIONS
1. THE FOLLOWING FORMULA SHOULD BE USED IN DETERMINING THE STORAGE VOLUME OF THE SEDIMENT TANK: 1 CUBIC FOOT OF STORAGE FOR EACH GALLON PER MINUTE OF PUMP DISCHARGE CAPACITY.

DETAIL 35 - PORTABLE SEDIMENT TANK (VERTICAL)



CONSTRUCTION SPECIFICATIONS
1. THE FOLLOWING FORMULA SHOULD BE USED IN DETERMINING THE STORAGE VOLUME OF THE SEDIMENT TANK: 1 CUBIC FOOT OF STORAGE FOR EACH GALLON PER MINUTE OF PUMP DISCHARGE CAPACITY.

DETAIL 74 - TREE PROTECTION



CONSTRUCTION SPECIFICATIONS
1. THE FOLLOWING FORMULA SHOULD BE USED IN DETERMINING THE STORAGE VOLUME OF THE SEDIMENT TANK: 1 CUBIC FOOT OF STORAGE FOR EACH GALLON PER MINUTE OF PUMP DISCHARGE CAPACITY.

NTS
TITLE: EROSION AND SEDIMENTATION CONTROL DETAILS
NUMBER: C-09